

Configuration of NETGEAR GS748T Gigabit Switch

- Introduction
- Configuration of NETGEAR GS748T Gigabit Switch
- Appendix I

Introduction

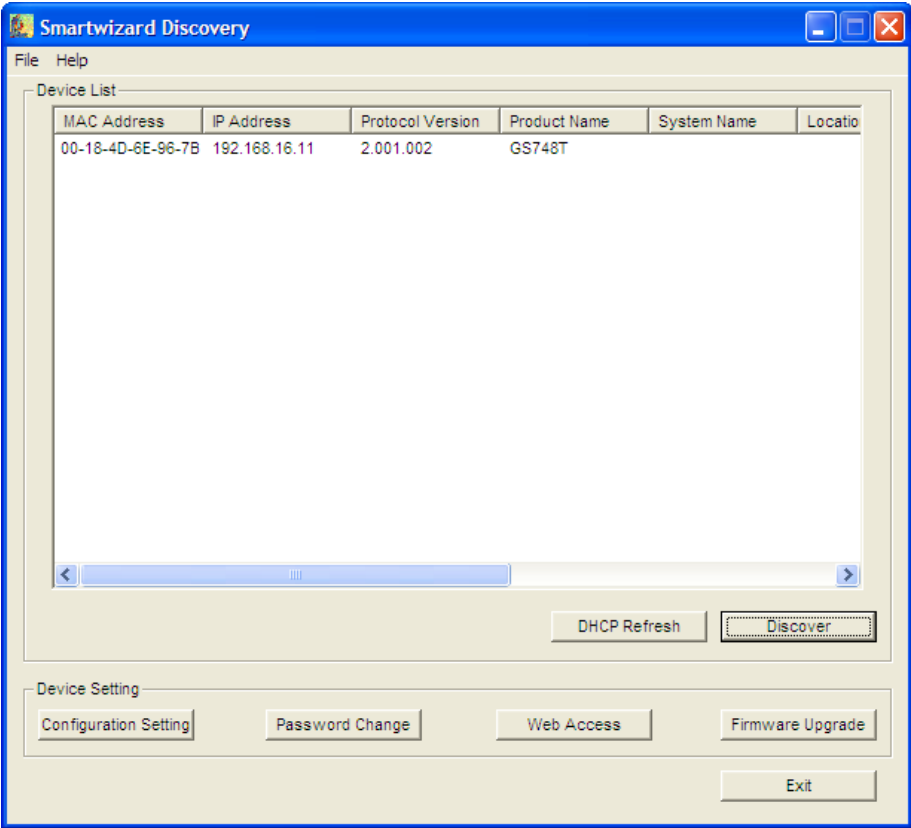
The New Company Ltd has its own Local Area Network with a connection to the Internet via an ADSL Broadband connection provided by Zen Internet over a standard telephone line provided by BT. The physical network infrastructure is outlined in the '*Network Infrastructure*' document, but briefly consists of an ADSL Broadband connection into the office, an ADSL modem feeding a Hardware Firewall into the office LAN. The Hardware Firewall feeds into a dedicated network card on a Server running Microsoft Small Business Server 2003 Premium Edition, and through this to a second network card feeding a Switch to service the Local Area Network with Gigabit connectivity.

This document details the process of configuring a '*NETGEAR GS748T*' Gigabit Switch specifically, but should be useful in the configuration of any other configurable switch used in its place.

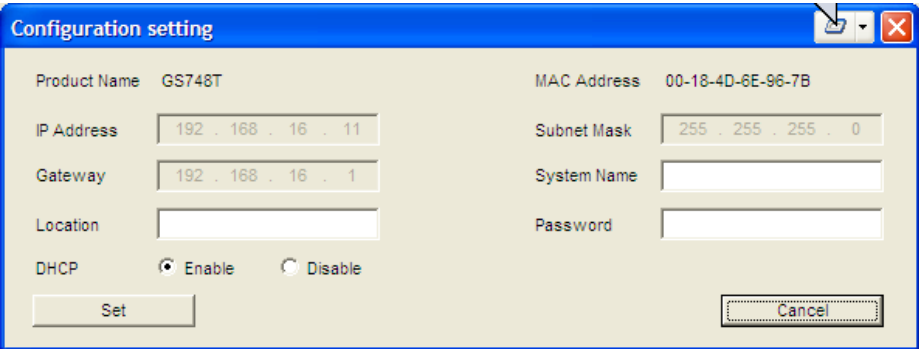
This document should be used as a working document, updated as changes are made.

Configuration of NETGEAR GS748T Gigabit Switch

Assuming DHCP server is running on your network, connect the PC used to configure the Switch via a Cat 5 network cable to the switch, install the NETGEAR configuration software and launch the Smartwizard Discovery process. Else, connect only the PC being used to configure the switch via a Cat 5 cable, and set IP address to be 192.168.0.100, and subnet mask of 255.255.255.0, then run the Discovery process.



Highlight the GS748T Product Name, and click on Configuration Setting



Click on the Disable option for DHCP, and enter

- **IP Address:** 10.10.10.6
- **Gateway:** 10.10.10.1
- **Location:** Comms Cabinet
- **Subnet Mask:** 255.255.255.0
- **System Name:** NETGEAR_Switch
- **Password:** password

Click on **Set** and **OK**, and **Exit**.

Ensure the PC has an IP address for the new IP range, e.g. 192.168.16.100, and browse to <http://10.10.10.6> (ensuring no Proxy Server settings are applied), login with password of **password**.

From the **System** menu, click on the **Password** link, enter the current password of password, the new password of **TryTh1s** twice and click on **Apply**, then again to login.

Click on the **IP Access List** menu link, click on **Add**, enter **10.10.10.1** and click on **Apply**. This will guarantee that the Switch can only be reconfigured from the Server with the password specified.